

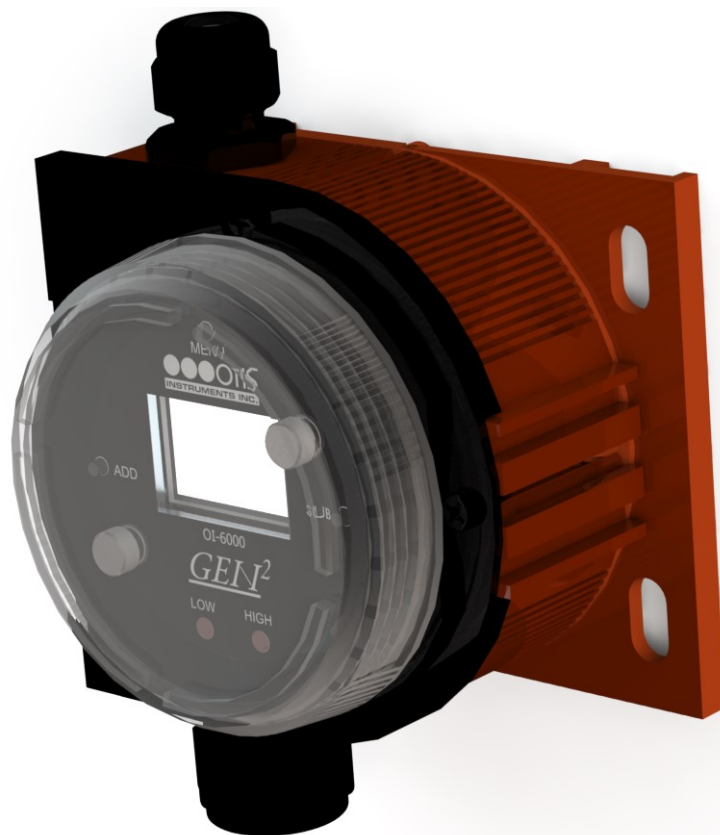
# GEN<sup>2</sup>

## OI-6000-EC-X-S Sensor Assembly

### Wired Ambient Air Toxic Gas Detector

Reliable gas monitoring of toxic gases in harsh conditions.

The Otis Instruments OI-6000 Series Ambient Air Toxic Gas Detector is a versatile assembly that uses an electrochemical sensor element to detect a variety of gases. Wired power (12 to 35 VDC) with 4-20 mA analog and RS-485 Modbus outputs. Magnetic switches allow for non-intrusive calibration while in the field as well as full system settings and diagnostics. These are just some of the useful features that make this device a truly remarkable gas detection system.



Gas Type	Range	T <sub>90</sub>
CL2	0-10 ppm	< 60 sec.
CLO2	0-1 ppm	< 120 sec.
CO	0-1000 ppm	< 45 sec.
H2	0-4% vol.	< 60 sec.
H2S	0-100 ppm	< 45 sec.
H2S2K	0-2000 ppm	< 175 sec.
HCL	0-30 ppm	< 300 sec.
HCN	0-50 ppm	< 70 sec.
NH3	0-100 ppm	< 90 sec.
NH3A	0-1000 ppm	< 120 sec.
NO2	0-20 ppm	< 30 sec.
O2	0-25% vol.	< 15 sec.
PH3	0-5 ppm	< 30 sec.
SO2	0-20 ppm	< 25 sec.

#### Product Features

- Electrochemical Sensor Element
- Wired Power (3-Wire), 12V to 35V DC Operating Voltage
- Temperature range -40 to +54 degrees C
- 102x64 Resolution Graphical LCD Screen; Transflective (Sunlight Readable) with LED Backlight
- 3 Push-Buttons (MENU, ADD, and SUB)
- 3 Magnetic Non-Intrusive Switches (MENU, ADD, and SUB)
- 2 Individually-Configurable Alarm Set-Points with two front panel LED indicators (amber and red)
- System Fault Detection
- Outputs - 4-20 mA (3-Wire) Analog and RS-485 Modbus communication options
- 1-Year Limited Warranty on Hardware
- Warranty is set by Sensor Element

#### OI-6000-EC-X-S Product Specifications

Product Specifications	
Sensor Type	Electrochemical
Power Voltage	Wired Power (3-Wire) 12 to 35 VDC
Power Draw	2 Watts Maximum
Protection	Power Electromagnetic Interference (EMI) Filter 4-20 mA Surge Suppression
Display Screen	102x64 Resolution Graphical LCD Screen Transflective (Sunlight Readable) with white LED Backlight
Interface	3 Push-Buttons (MENU, ADD, and SUB) 3 Magnetic Non-Intrusive Switches for Calibration (MENU, ADD and SUB)
Customizable Settings	2 Individually-Configurable Alarm Set-Points
T <sub>amb</sub> Temperature Range	-40°C to +54°C / -40°F to 130°F
Wired (Analog) Output	4-20 mA (3-Wire) - Fault Terminal
(Digital) Output	RS-485 Modbus
Product Dimensions	6.9 in. L x 5.1 in. W x 3.5 in. D (Max. Dimensions w/ Attachments)
Total Weight	3 lbs.
Hardware Warranty	Limited one year
Sensor Element Warranty	Varies with Gas Type
Part Number Formula	OI-6000-EC-[Gas]-S OI-6000-EC-X-S

