



**Gas Instrumentation & Flame Detection**

Leaders in Gas Detection Since 1983, WireFree Since 2005

Made in the United States of America

# BATTERY POWERED



**Explosion Proof Sensor**

**OI-6900**

- Electrochemical, PID, or IR sensors available
- Wireless communication
- Battery powered



**Explosion Proof Quad**

**OI-6940**

- Up to 4 sensors in one enclosure
- Electrochemical, PID, or IR sensors available
- Wireless communication
- Non XP version available



**Non XP Sensor**

**OI-6900 CUBE**

- Electrochemical, PID, or IR sensors available
- Wireless communication
- Battery powered

# WIRED POWERED



**3-Wire Sensor**

**OI-6000**

- Electrochemical, IR, catalytic bead and PID sensors
- Output options:
  - Wireless 900 MHz or 2.4 GHz
  - 3-wire 4-20 mA analog out
  - RS-485 Modbus output



**Non XP Sensor**

**OI-6000 CUBE**

- Electrochemical, IR, Refrigerant or PID sensor element
- 3-wire 4-20 mA
- RS-485 Modbus output
- Relay options available



**2-Wire Sensor**

**OI-6750**

- Electrochemical sensor
- 2-wire loop-powered, 4-20 mA out
- 12 to 35 VDC operating voltage

# WIRELESS CONTROLLERS

## 32 Channel

### OI-7010



- 32 channel hybrid controller
- RS-485 Modbus Output
- Radio options: 900 MHz radio standard or 2.4 GHz radio
- 12 to 35 VDC operating voltage with optional AC power supply
- 4 programmable relays

## 32 Channel

### OI-7032



- 32 channel hybrid datalogging touchscreen controller
- RS-485 Modbus Output
- Radio options: 900 MHz radio standard or 2.4 GHz radio
- 24 VDC operating voltage with optional AC power supply
- 4 programmable relays

## 32 Channel

### OI-7530



- 3 programmable relays
- Radio options: 900 MHz radio standard or 2.4 GHz radio
- 12 to 35 VDC operating voltage with optional AC power supply
- Output options: wet contact DC fault terminal, relay 3 can optionally be configured as a fault relay, RS-485 Modbus

## 255 Channel

### OI-9850



- RS-232 or RS-485 Modbus Output
- Radio options: 900 MHz radio standard or 2.4 GHz radio
- 12 to 35 VDC operating voltage with optional AC power supply
- Provides optional 4-20 mA outputs, up to 32

# WIRED MONITORS

## ProSafe 4x32

### OI-7432



- 32 channel wired Modbus monitor
- Output options: wet contact DC fault terminal, relay 4 can optionally be configured as a fault relay, RS-485 Modbus

## ProSafe 4x8

### OI-7480



- 12 channel wired monitor that supports any 4-20 mA wired sensor
- Output options: wet contact DC fault terminal, relay 4 can optionally be configured as a fault relay, RS-485 Modbus

# ADD-ONS



**Signal Repeater**

**OI-9900**

- Radio options: 900 MHz radio standard or 2.4 GHz radio
- 12 to 35 VDC operating voltage
- Non XP version available



**32 Channel**

**OI-7530 XP**

- 32 channel WireFree relays: Contains 3 relays that can be activated by up to 32 remote WireFree sensors
- Radio options: 900 MHz radio standard or 2.4 GHz standard radio
- 12 to 35 VDC operating voltage with optional AC power supply
- Output options: wet contact fault terminal, relay 3 can optionally be configured as a fault relay, RS-485 Modbus



**Wireless Signal Meter**

**OI-9100**

- Portable signal-strength meter
- Displays radio signal strength and gas readings
- Communicates with all WireFree sensors on network



**OTISLINK**

**Telemetry**



**Flame Detectors**

**UV, Multi-Spectrum IR, UV/IR**

# ACCESSORIES



**NEMA 4/4X Alarm**



**CID1 Alarm**



**CID2 LED Strobe**

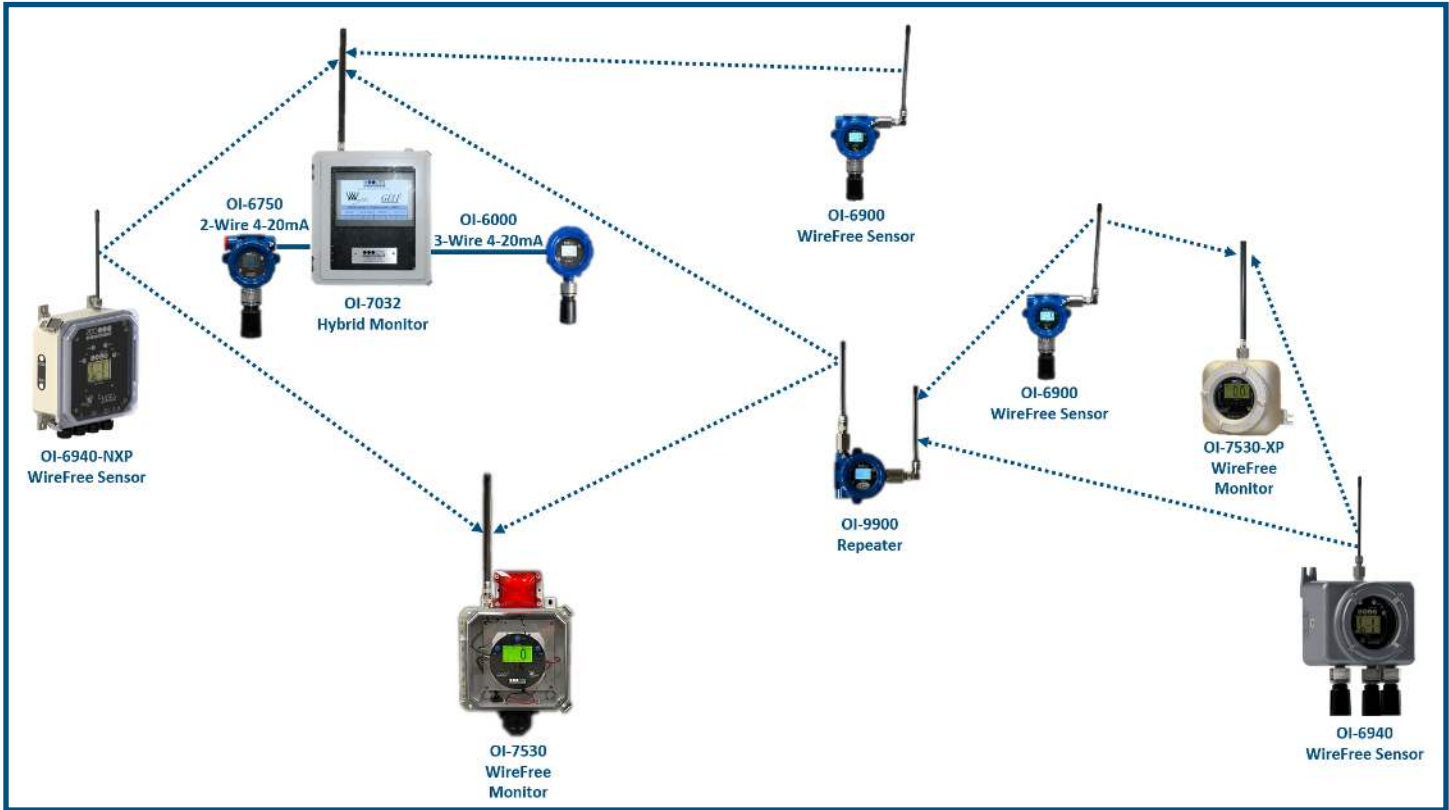


**CID1 Horn & Strobe Alarm**

**Horn & Strobe Alarm**

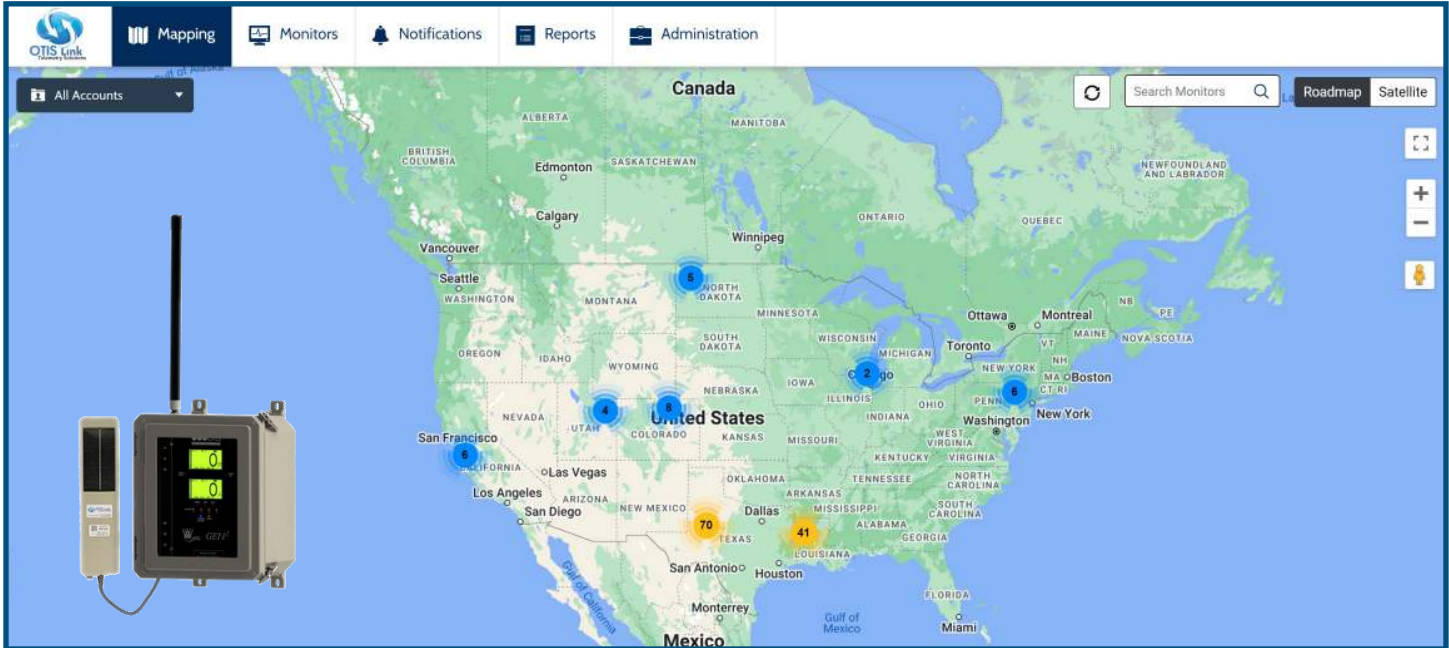


# SYSTEM LAYOUT



# OTISLINK

**DISPLAYS | ALERTS | TRENDS | REPORTS**



Gas Name	Range
Arsine - AsH <sub>3</sub>	0-1 PPM
Formaldehyde - CH <sub>2</sub> O	0-10 PPM
Methyl Mercaptan - CH <sub>3</sub> SH	0-10 PPM
Chlorine - Cl <sub>2</sub>	0-10 PPM
Chlorine Dioxide - ClO <sub>2</sub>	0-5 PPM
Carbon Monoxide - CO	0-1000 PPM
Ethylene Oxide - EtO	0-10 PPM
Hydrogen - H <sub>2</sub>	0-4% Vol
Hydrogen Sulphide - H <sub>2</sub> S	0-10 PPM
	0-25 PPM
	0-50 PPM
	0-100 PPM
Hydrogen Chloride - HCl	0-20 PPM
	0-200 PPM
Hydrogen Cyanide - HCN	0-100 PPM
Hydrogen Fluoride - HF	0-10 PPM
Ammonia - NH <sub>3</sub>	0-100 PPM
	0-300 PPM
	0-1000 PPM
Nitrogen Monoxide/Nitric Oxide - NO	0-250 PPM
Nitrogen Dioxide - NO <sub>2</sub>	0-20 PPM
Oxygen - O <sub>2</sub>	0-25% Vol
Ozone - O <sub>3</sub>	0-5 PPM
	0-100 PPM
Phosphine - PH <sub>3</sub>	0-5 PPM
Silane - SiH <sub>4</sub>	0-50 PPM
Sulfur Dioxide - SO <sub>2</sub>	0-20 PPM
Methane - CH <sub>4</sub>	0-100% LEL
	0-100% Vol
Propane - C <sub>3</sub> H <sub>8</sub>	0-100% LEL
Carbon Dioxide - CO <sub>2</sub>	0-5% Vol
	0-100% Vol
	0-5000 PPM
Refrigerant - R1234yf	0-2000 PPM
Refrigerant - R1234ze	0-2000 PPM
Refrigerant - R134A	0-2000 PPM
Refrigerant - R32	0-2000 PPM
Refrigerant - R404A	0-2000 PPM
Refrigerant - SF <sub>6</sub>	0-2000 PPM
Volatile Organic Compound - VOC - 10.6eV Lamp	0-10 PPM
	0-20 PPM
	0-50 PPM
	0-1000 PPM
	0-2000 PPM
Volatile Organic Compound - VOC - 10.0eV Lamp	0-100 PPM
Volatile Organic Compound - VOC - 11.7ev Lamp	0-100 PPM

# CONTACT US

Corporate Office  
 301 South Texas Avenue  
 Bryan, Texas 77803  
 Phone: (979) 776-7700

Midland Office  
 3308 Norden Drive  
 Midland, TX 79706  
 Phone: (432) 563-5858

sales@otisinstruments.com  
 www.otisinstruments.com

